

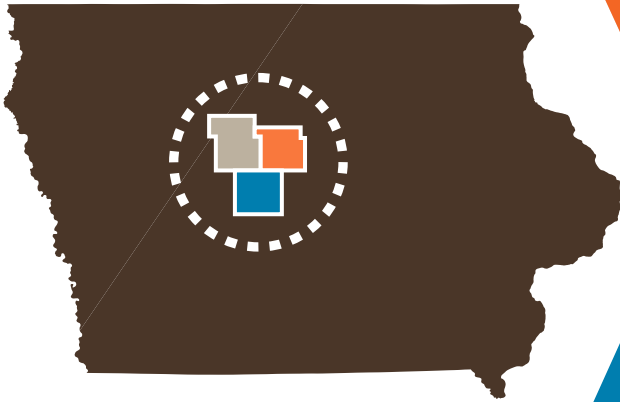
Boone Forks Regional Plan

Boone-Hamilton-Webster Counties

Look Forward and Launch

THE PLAN

Supports a three-county region focused on achieving economic, social and natural resources balance and improvements.



VISION

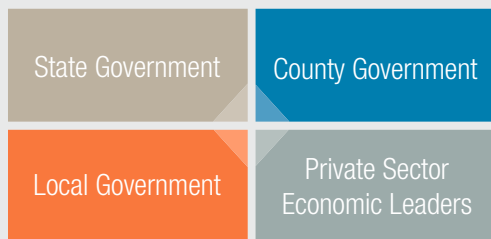
Lands and communities fulfilling dreams ...

A region renowned for its breathtaking river valleys, high trestle rail lines, working farms and natural lands — connected to historic communities of character and opportunity, allowing all to reach their dreams.

MISSION

People and places work and grow together.

To collaborate across all boundaries — connecting arts, heritage, nature, community and economics — achieving regional vitality.



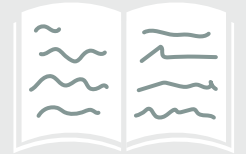
Collaborate to build a strong regional approach for the future using exceptional natural, agricultural, geological and historical features.



Focus groups, interviews, public engagement sessions and stakeholder workshops have led to a series of concepts designed to meet regional needs - from collaboration for marketing to intentional protection of historic river valleys and historical features.



Nature-based artisan education, world-class welcome facilities, overnight stay, and an expansion of a multi-faceted trails and byways network (water and land) emerges as “wow” factors and connectors.



In the final analysis, this plan showcases how intensive agricultural production and natural resources can both thrive in the same setting.

The Kate Shelley Welcome Center

Home of the Lincoln Highway Heritage Byway and Legacy Learning

THE PLAN



– Diverse Opportunities for Overnight Stay

Repurposing a section of the Kate Shelley Bridge as an interpretive focal point and linking it to the incoming national destination: The Lincoln Heritage Byway.

– Kate Shelley Welcome Center

A vantage point of the past, present and future - like no other. Both metaphorical and physically dramatic, it provides exceptional potential to “pull” byway visitors into the region and encourage their stay.

Let's Get Started!

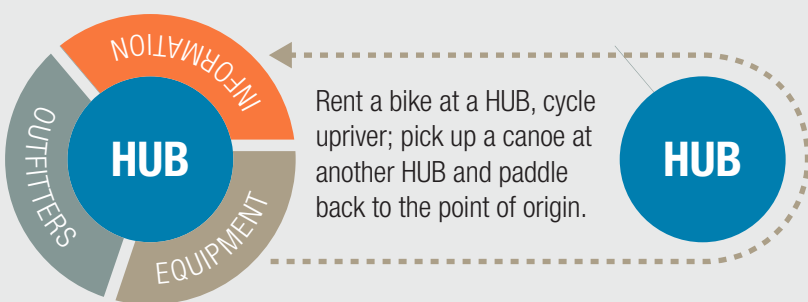
- 1 Identify / convene a staffed Project Committee.
- 2 Pursue protecting the Kate Shelley Bridge.
- 3 Secure resources to execute a feasibility study.

We create a world-class tri-county regional park.



Hike, Bike, and Paddle: A Multi-Use Network

THE PLAN



Rent a bike at a HUB, cycle upriver; pick up a canoe at another HUB and paddle back to the point of origin.

Pathways to Traverse

200 MILES

RAILS WITH TRAILS

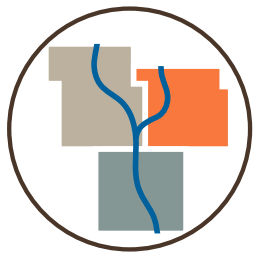
20-miles linking Fort Dodge to Duncombe to Webster City; a corridor to celebrate Iowa's agricultural and railroad heritage with strategically spaced oases for users along the way.

ABOUT THE PARTNERS

- Decision-makers
- Multi-use Trail Enthusiasts
- Regional / Community Leaders
- Livery / Outfitter Interests
- Tourism Professionals
- Technology Partners
- Outdoor Skills-building Educators

Let's Get Started!

- 1 Convene a staffed coordinating committee and set-up task force.
- 2 Secure resources for more detailed study/design.



Boone Forks Regional Plan

Boone-Hamilton-Webster Counties

Legacy Learning Revisited: Hands-on Arts, History and Nature

THE PLAN

NATURE
Naturalists

HISTORY
Historians

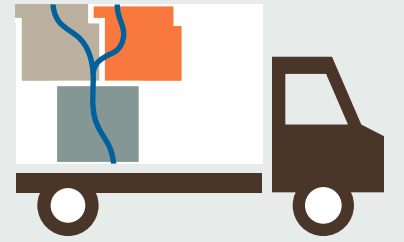
ARTS
Artists
Artisans
Makers



The Kate Shelley Welcome Center will be the permanent home for Legacy Learning.

Let's Keep Going!

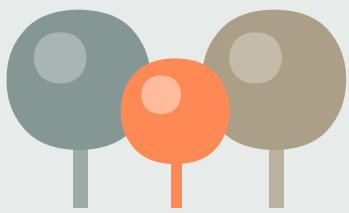
- 1 Expand programs.
- 2 Rebrand.
- 3 Promote to all ages.
- 4 Mobilize.



Legacy Learning in the Boone River Valley has already launched this exceptional concept to link to expert work.

Protect the Source: Boone Forks and Beyond

THE PLAN



SUCCESS =

The natural resources values of the entirety of Boone Forks Region's river valleys and woodlands deserve protection – through conservation easements, wildlife management or park designations, public ownership, etc.

Let's Get Started!

- 1 Identify land sections at highest risk.
- 2 Partner to put reasonable protections in place.

Quirky Wonders: Tours and Itineraries Tailored to Your Curiosity

THE PLAN



Tours are often designed to fit your "demographic." Let's switch that up and get you in the right places with tours based on motivations and interests.



A mix of itineraries and tour options to get to both regional residents and visitors – then grows as technology continues to help us understand what matters most to YOU.



Intrigued by ghosts and history? The cemetery tour is for you.



Inspired by your spirit of adventure? You'll want to hike, bike and paddle with a side-trip to Briggs Woods.

Let's Get Started!

- 1 Polish and publish the current tours that appear in the plan.
- 2 Post and promote.

Brand and Market: Unite to Tell the Region's Story

THE PLAN

BEST-KEPT-SECRET NO MORE!

All of the partners want to make sure the Boone Forks Region ends up on the proverbial map – through joint branding, marketing and promotion.

Let's Get Started!

- 1 Secure university support for a branding exercise.

Making It Happen

THE PLAN



Prairie Rivers RC&D is in the process of evaluating its role in this plan.



Meanwhile, the plan already has a home at the respective conservation boards, within the Chambers of Commerce, tourism divisions and at the RC&D – at a minimum.



The plan highlights a number of funding opportunities and strategies, building from a new-found commitment to regionalism and launching through the upcoming 2020 State Parks Centennial Celebration.

Assets that Leave the Potential of this Region Unbounded

THE REGION

120
miles of water trail

FIFTY county park assets

3
state parks



state preserves



- Living railroad and Explorer History
- OHV Parks
- Artisanal Education
- Nationally and Internationally Recognized Points of Interest